



GMT MONTHLY MEMBERSHIP PROGRESS REPORT

Results as of: 6/30/2019

Multiple District C

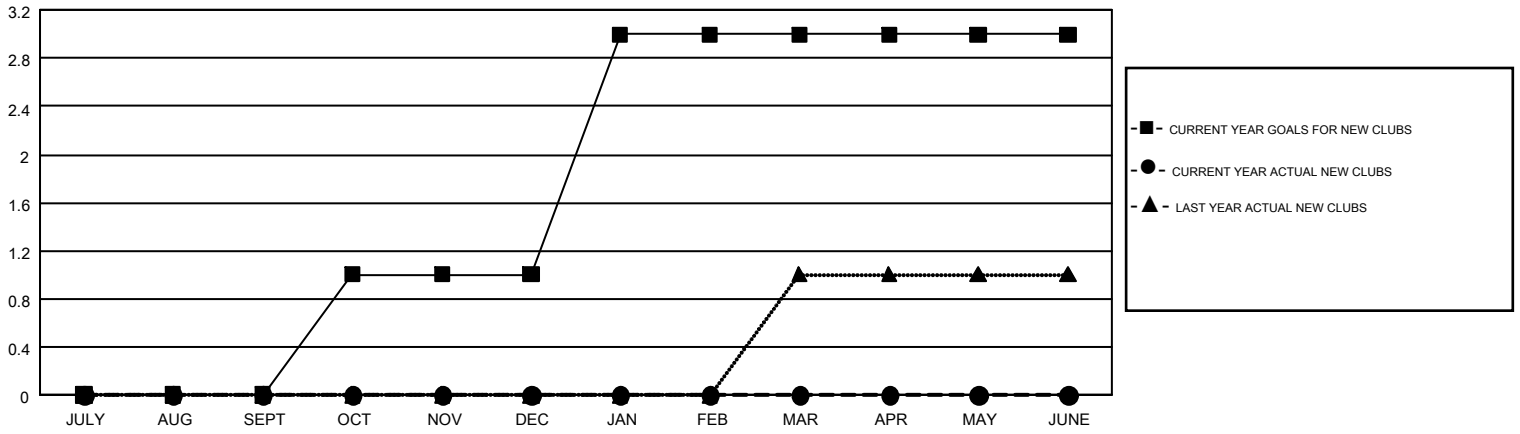
LOCATION: ALBERTA

GMT: GORDON ZIEGLER

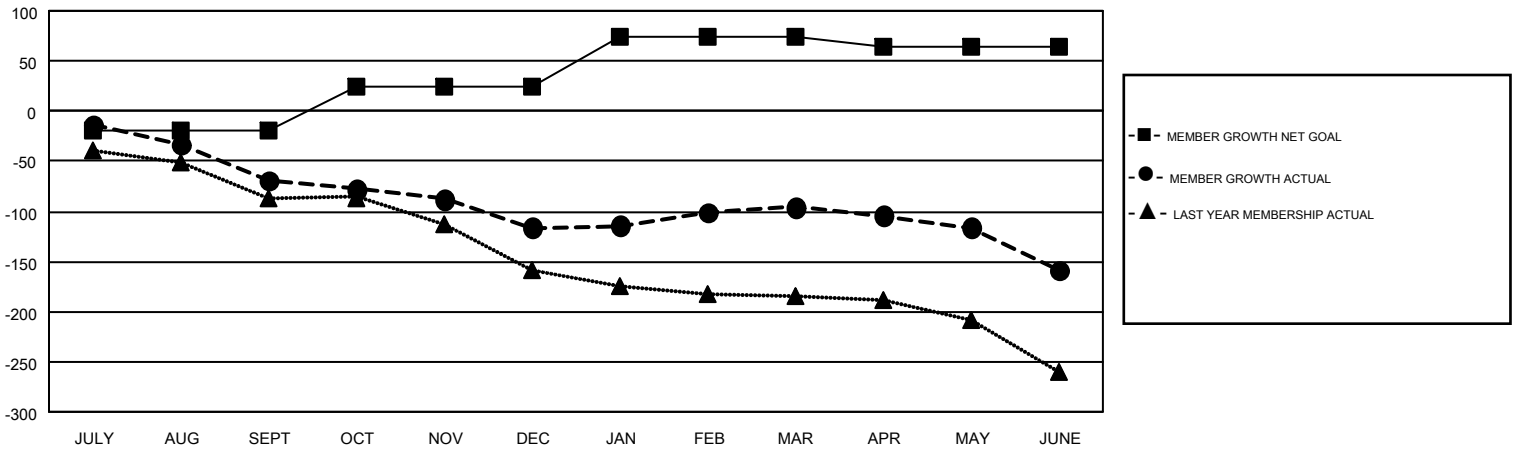
GMT CA 2

Clubs				Members			
RESULTS FOR 2018-2019				RESULTS FOR 2018-2019			
QUARTER	NEW CLUB GOAL	NEW CLUBS	DROPPED CLUBS	QUARTER	MEMBER GROWTH NET GOAL	MEMBER GROWTH ACTUAL	DROPPED MEMBERS ACTUAL (including transfers)
JULY/AUG/SEPT	0	0	0	JULY/AUG/SEPT	-20	42	104
OCT/NOV/DEC	1	0	0	OCT/NOV/DEC	45	90	128
JAN/FEB/MAR	2	0	0	JAN/FEB/MAR	50	122	80
APR/MAY/JUNE	0	0	1	APR/MAY/JUNE	-10	80	139

GOALS AND ACTUAL NEW CLUBS CUMULATIVE



GOALS AND ACTUAL MEMBERS CUMULATIVE



DROPPED CLUBS: 1	99 CLUBS OF 189 ADDED 1 OR MORE NEW MEMBERS	<u>GENDER DISTRIBUTION</u>	
		MALE	2,762 (69.55%)
		FEMALE	1,209 (30.45%)
<u>DROPPED MEMBERS</u>		TOTAL FAMILY UNIT MEMBERS 696	
DECEASED	63	FAMILY MEMBERS PAYING HALF DUES 355	
CLUB CANCELLED	27		
OTHER	361		
TOTAL	451		

[CLICK HERE FOR CUMULATIVE MEMBERSHIP DATA](#)